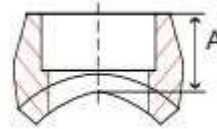




Socket Weld Outlets

Forged Carbon Steel, Class 3000

Inches / Pounds



Part #	Socket Size (inch)	For Nominal Pipe Sizes	(A) Center Length	Approximate Weight Each
K3SWO.5-.75X36	1/2	3/4" thru 36"	1.01	0.20
K3SWO.75-1X1.25	3/4	1" thru 1-1/4"	1.13	0.20
K3SWO.75-1.5X36	3/4	1-1/2" thru 36"	1.13	0.20
K3SWO1-1.25X2.5	1	1-1/4" thru 2-1/2"	1.38	0.50
K3SWO1-3X36	1	3" thru 36"	1.38	0.50
K3SWO1.25-1.5	1-1/4	1-1/2"	1.38	0.80
K3SWO1.25-2X3.5	1-1/4	2" thru 3-1/2"	1.38	0.80
K3SWO1.25-4X36	1-1/4	4" thru 36"	1.38	0.80
K3SWO1.5-2X2.5	1-1/2	2" thru 2-1/2"	1.44	1.00
K3SWO1.5-3X5	1-1/2	3" thru 5"	1.44	1.00
K3SWO1.5-6X36	1-1/2	6" thru 36"	1.44	1.00
K3SWO2-2.5X3	2	2-1/2 thru 3"	1.56	1.70
K3SWO2-4X6	2	4" thru 6"	1.56	1.70
K3SWO2-8X36	2	8" thru 36"	1.56	1.70
K3SWO2.5-3X3.5	2-1/2	3" thru 3-1/2"	1.62	2.50
K3SWO2.5-4X5	2-1/2	4" thru 5"	1.62	2.50
K3SWO2.5-6X8	2-1/2	6" thru 8"	1.62	2.50
K3SWO2.5-10X36	2-1/2	10" thru 36"	1.62	2.50
KSWO3-5X6	3	5" thru 6"	1.81	4.00
KSWO3-8X14	3	8" thru 14"	1.81	4.00
KSWO3-16X36	3	16" thru 36"	1.81	4.00
KSWO4-5X6	4	5" thru 6"	1.94	6.30
KSWO4-8X10	4	8" thru 10"	1.94	6.30
KSWO4-12X20	4	12" thru 20"	1.94	6.30
KSWO4-22X36	4	22" thru 36"	1.94	6.30

***Forged fitting material conforms to ASTM SA105N, NORMALIZED**

***NPT threads conform to ASME B1.20.1**

***Manufacturing facility is ISO 9001:2008 Certified**

***Dimensions conform to ASME B16.11**